

C O R P O R A T E H I G H L I G H T S

CHOOSE
DISTINCTION
AND
EVOLUTION

*Keep evolution on your side. Choose **KISWOK**.*



KISWOK

Engineering Better Tomorrows

CHAIRMAN'S ADDRESS



When one cannot find the impetus to excel, one is but extinct. When one cannot unconditionally commit beyond circumstances, one is but extinct. When one needs to work for things other than the work itself, one is but extinct. When one cannot deliver when one's competence is questioned, one is but extinct. Thankfully, we at KISWOK internalized these values inculcated by our Founder Chairman and thus, we evolved. Thus, we could attain distinction.

At KISWOK, we have envisioned distinction as an everyday practice. We aim at constant process development. Evolution of our core processes is all encompassing in technology, R & D, quality, sales and production techniques.

Our products, which have found global appreciation, are representative of an amalgam of in-depth research and product knowhow, which we have been able to embody in our work for almost 60 years.

The success of KISWOK is a culmination of contributions from our employees, clients and associates. We wish to forge stronger relations with all so that we can remain ever evolved.



S S Kejriwal
Chairman

MD'S KEYNOTE



The whole point of one's life needs to revolve around the singular concept of limitless 'commitment'.

That is the core value we imbibe in all we do at KISWOK. Our commitment to evolution, timeliness, quality and process excellence have seen us transform into an organisation that 'can'. We thank all our partners who have helped us achieve that.

Recently, the Government of India introduced the concept of 'Make in India'. It stands to transform the Global Manufacturing fabric dramatically.

We, at KISWOK, pride ourselves in being a cog in that wheel. Our achievements and constant endeavours underscore the reason why.

Finally, I would like to sum up the inheritance tradition at KISWOK as follows: "We live in the present, remember the past and fear not the future because it doesn't exist as there is only now."



R K Kejriwal
Managing Director

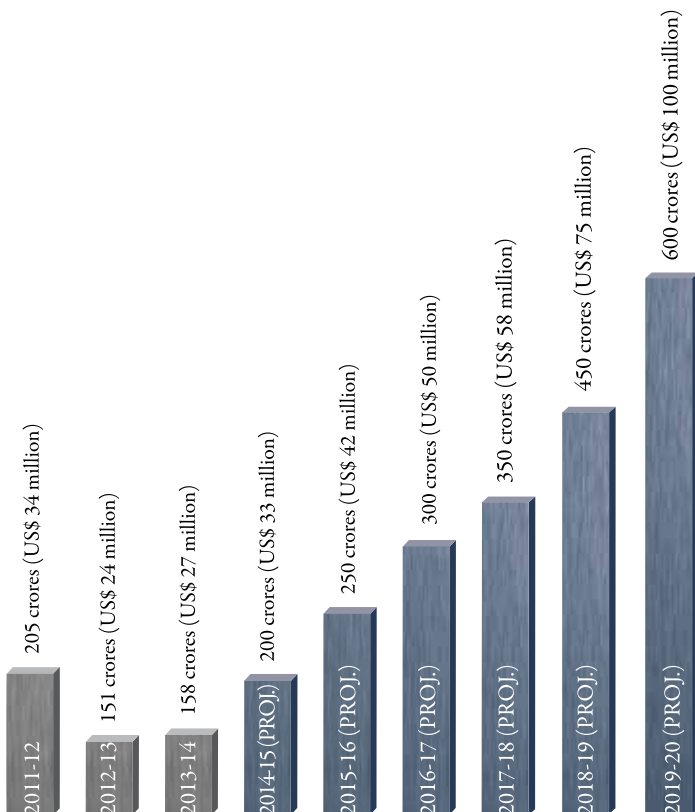
EVOLUTION IS THE ONLY OPTION

THE DISTINCTION OF BEING KISWOK



KISWOK won the National Trophy Awards twice for Export Excellence from the Honourable Presidents of India (ABOVE) Dr. N. Sanjeeva Reddy in 1977 and (BELOW) R. Venkataraman in 1980.

- Only foundry to receive National Trophy Awards for “Export Excellence” twice from the Honourable President of India.
- The Largest Automotive Castings Manufacturer in Eastern India.
- Production Capacity of 100,000 MT per Annum .
- Three generations service in casting industry spanning 57 years.
- Outstanding quality with product conformity certificates by British Standard Institute, UK and DET NORSKE VERITAS.
- Advanced Machineries, Technologies & Skilled Manpower.
- Prompt and efficient after sales services.
- Completely self-financed, Zero Debt Company.
- Raw materials quality is checked in its in-house laboratories as per standard specification before production.
- R&D is engaged in developing best quality castings.
- A customized ERP system is run to manage all its information.



ANNUAL SALES



What ‘Swadesh’ did for India once, ‘Make in India’ stands on the cusp of doing again. But this time, not just for ourselves; ‘Make in India’ stands atop the proudest cliff roaring out the arrival of the new alpha, the arrival of the next destination that fulfils the world’s manufacturing needs.

VISION

To represent India as a destination for global manufacturing leadership, taking engineering beyond imagination.

MISSION

To ensure the success of all customers and stakeholders through innovation and enhancement of workforce livelihood benchmarks, process standards, manufacturing practices and project management. Within this framework, our mission is to also safeguard the environment and achieve excellence in ‘green’ practices. Moreover, through exponential expansion of plant outlays and number of plants, we would like to further surpass ourselves in all that we do.

MILESTONES: MOVING HIGHER AND BEYOND

2012 Successfully commissioned the Installation of DISA automatic Moulding line, which could produce 90 moulds per hour.

2003 Company takes a leading decision by making Automobile Castings for the Countries Largest HCV makers "TATA" and entered the automobile segment.

2000 The company successfully commissioned a new "KISWOK Foundry" with modern machineries that helped in switching over to an automated system

1982 Started exporting its products to European Countries helping the company broaden its international base.

1980 Received National Trophy Award for "Export Excellence" for 2nd time from the Honourable President of India Mr. R Venkataraman, which boosted the company's confidence further.

1973 Company introduces CI Manhole Covers creating a market niche

1977 Received National Trophy Award for "Export Excellence" from the Honourable President of India Mr. Sanjeeva Reddy. Also, started exporting its products to United States of America.

1970 1st bigger product diversification had been done as CI Pipe fittings, which facilitated supplies to Urban Development Projects.

1972 Started exporting its products to Middle East Countries thus entering International Markets.

1957 Established as "Kejriwal Iron & Steel Works" with Heavy Rollers manufacturing for Jute Mills.

1960 Started making Fly Wheels.

2014 Daimler passed the final audit (On-Site Assessment or OSA) for their requirement of castings.

2009 Company successfully put a new Machine Shop equipped with 9 CNC VTL Lathes for in-house machining for its castings.



Staying ahead. Always.

- ISO 9001:2008 Certified by British Standard Institute, UK for Total Quality Management system for the manufacture of ductile and grey iron castings.
- ISO/TS 16949:2009 Certified by British Standard Institute, UK for Quality Management system for Product designing & Development.
- ISO 14001:2004 for Environmental Management system.
- OHSAS 18001:2007 for Occupational Health & safety management system.

Product Certification

- ISI mark for ductile iron pipe fittings as per IS 9523.
- Ductile Iron Pipe fittings size DN 40 to DN 1000 ensures Product Standard as per EN 545:2010 by DNV.
- Kitemark as per BS EN 124 for Manhole Frame and Cover.
- Manhole Cover & Frame and Gully Gratings up to Class D400 ensure product Standard as per EN 124:1997 by DNV.



DESIGN DEVELOPMENT

Product Design

1. AutoCAD 2013 (Autodesk INC.)

Autocad is the best CAD software for making and editing 2D drawings very quickly and prominently.

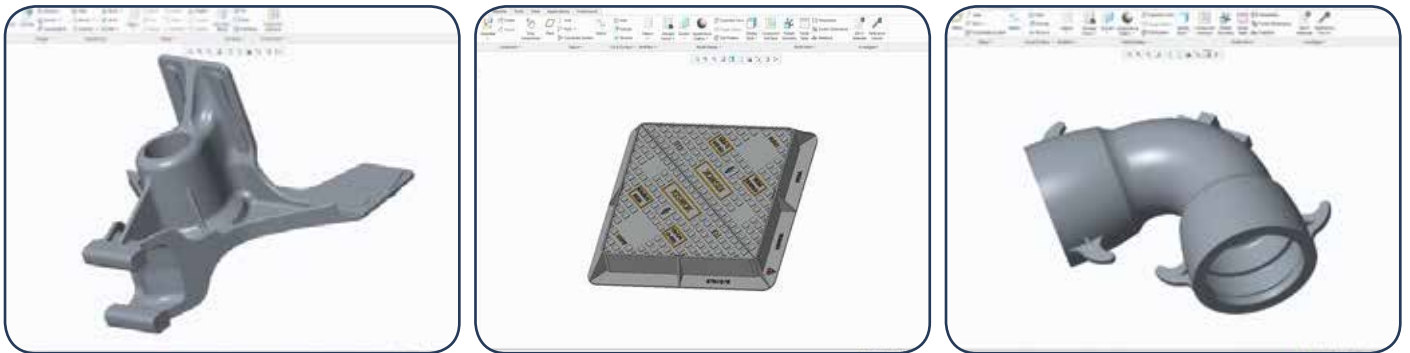
Advantage: For using this software, the design department does not use manual paper drawings, which takes thrice the time to make a 2D drawing.



2. Creo Parametric (PTC Corporation)

Creo Parametric is one of the best parametric software for making the 3D Model to visualize the model even before making the practical model.

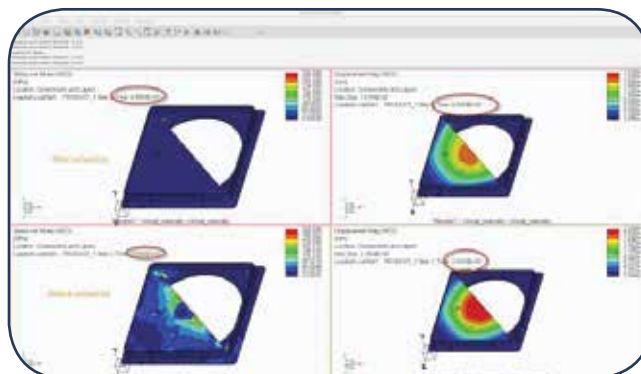
Advantage: Making the 3D CAD model gives the exact weight of the product by inputting the material properties of the product as per customer requirement at the very first stage, which helps reduce the price of the product compared to other manufacturers.



3. Creo Simulate (PTC Corporation)

Creo Simulate is an analysis software to do the stress analysis/ load test on the product to check the sustainability of the product on a particular load.

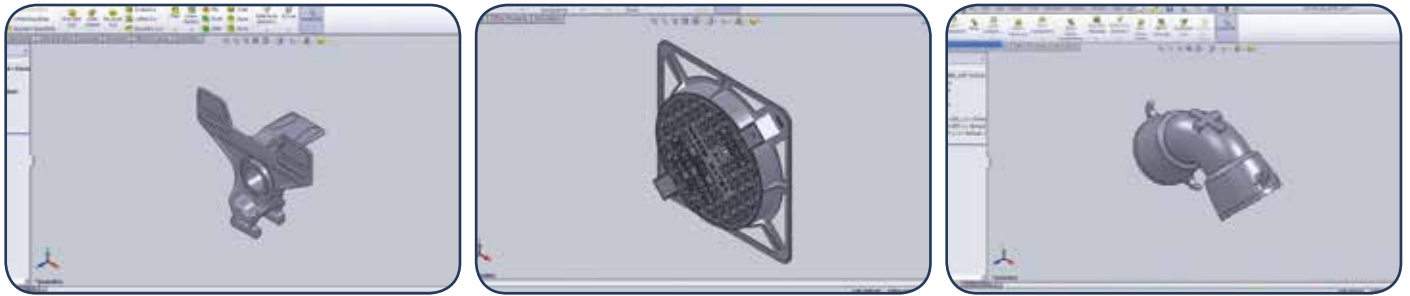
Advantage: It helps optimizing the design of the product to create less weight and negate rejection.



4. Solid Works (Dassault Systemes Group)

Solid Works is also one of the best parametric software for making the 3D Model to visualize the model before making the product in practical.

Advantage: In-house product development in very short time with accurate analysis and optimization.

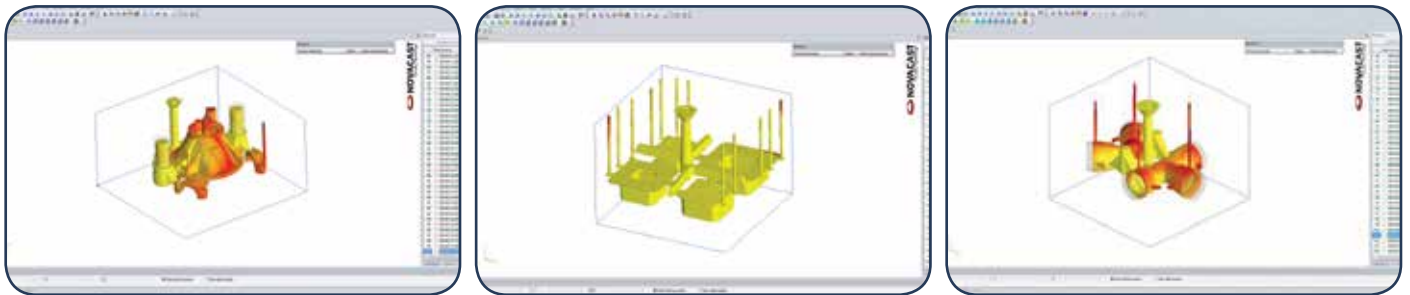


Gating System Design

1. NovaFlow & SolidWorks :

Casting process simulation with NovaFlow & SolidWorks has proven to be an important tool in product and production development for validating designs prior to physical trials, resulting in substantial savings in manufacturing costs.

Advantage: Casting defect prediction by software analysis in advance can get the right casting in the very first shot. It also helps to reduce the cost due to high yield optimization.

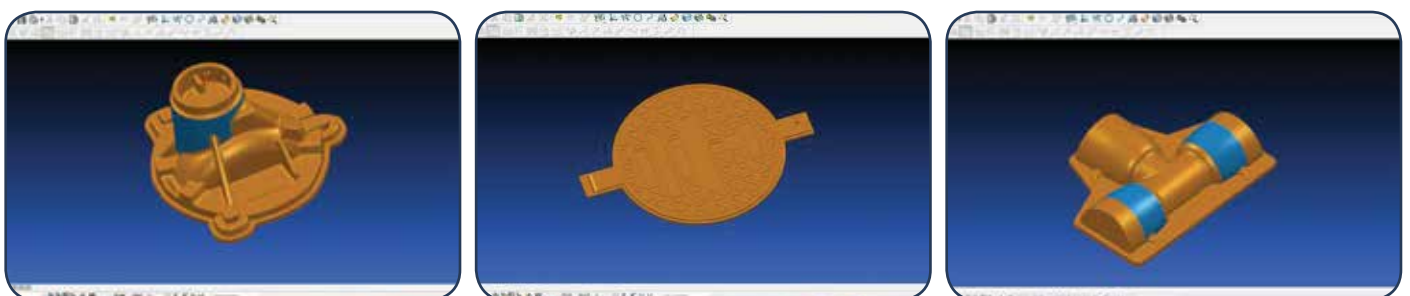


Pattern Design

1. DELCAM Power Shape

Delcam software is a 3D modelling system to make the 3D model easily, fast, and prominently.

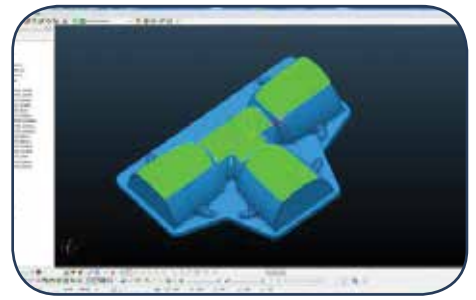
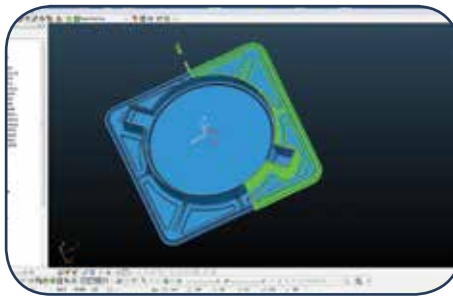
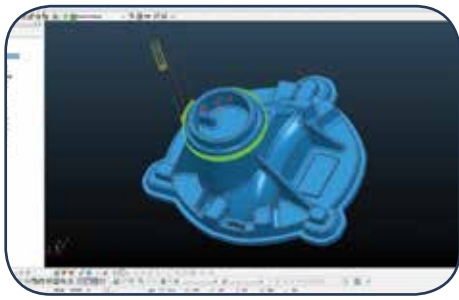
Advantage: Very easy & fast to modify & recover the imported model from other 3D modelling software.



2. DELCAM Power Mill

Delcam Power Mill is a software by which we can make the perfect CNC program for machining the product accurately with optimized machining time & visualize the whole product machining of the product before practical product machining.

Advantage: Achieving accurate dimension of product as per the design model after machining



PATTERN SHOP

Equipped to manufacture accurate metallic and non-metallic patterns in-house with the help of Vertical Machining Centre (VMC) & Computer.

Numerical Control (CNC) machine:

Coordinate Measuring Machine (CMM) is essential for accurate measurement of critical profile, which cannot be measured manually by general dimension measuring instruments. Proper comparison with CAD drawings can be made for dimensional inspection.

Pattern Archiving:

An excellent International pattern storage for storing 1400 patterns and arrangements to trace out any pattern with in 5 minutes.

Advantage: In house accurate pattern development helps reduce the lead time. Also, cast patterns can be stored safely without any damage.



Vertical Machining Centre



Coordinate Measuring Machine



International standard pattern storage system

IN-HOUSE INSPECTION FACILITIES



Metallurgical laboratory equipment

- Completely equipped with two ARL – 3460 Optical Emission Spectrometer having 26 channels for bath sample & final chemistry analysis.

Advantage: 26 elements of chemical composition can be checked at a glance without affecting the production.

- Leica Microscope with Image Analyzer and other machines to analyze micro-structure & matrix.

Advantage: Micro-structure can be checked immediately for every heat of casting.

Wet laboratory equipment

Strohlein Apparatus for carbon determination, three muffle furnaces with temperature range 50°C to 1400°C, Digital hot air oven and Digital pH Meter with Auto Temperature Compensation with other advance equipment.

Advantage: We can check raw material quality as per requirement and determine the charge mix in advance, which improves productivity as well as quality.

Mechanical laboratory equipment

- Tensile Testing Machine (Make: FIE) of 10 MT and

60 MT capacity to determine the tensile strength of casted materials.

- Hardness Testing Machines (Make: FIE and Fine Testing) are also used for testing the hardness of casted materials.

Advantage: It helps to check the mechanical property of casting in-house and reports can be generated faster as per customer requirement.

Sand testing equipment

- Digital Universal Strength Testing Machine (Make: Versatile) for testing of green compressive strength / shear strength.

- Permeability Meter (Make: Versatile) for permeability testing of moulding sand.

- Wet tensile strength testing machine (Make: Versatile) for checking hot strength of moulding sand.

- Digital Moisture Tester (Make: Versatile) – moisture test done by rapid tester, as well as hot air oven.

Advantage: Moulding sand is continuously monitored statistically in-house in the sand laboratory for better castings. This gives defect-free consistent dimensions in casting.



SAND PLANT



Two automatic sand plants for different moulding lines, consisting of two Sand Mullers of capacity 30 MT/hr. each (Make: Fonk - Taiwan) and two Sand Mixers of capacity 50 MT/hr. & 64 MT/hr. (Make: DISA) are operational. There are also two rotary & vibrating sand coolers with world class De-Dusting system. The SMC (Sand Multi Controller) system helps total control of sand parameters, with SCADA automation. The sand plant is also equipped with Sand Drying System (5 MT/hr.) and larger Pneumatic Conveying System (6 MT/hr.) to convey the material in the correct time.

Advantage: Automatic systems can produce & control very consistent quality of sand property, which helps to reduce mould & casting quality variation, as a result the customer gets better quality castings with consistent wall thickness.

COLD BOX CORE SYSTEM

Equipped with an Automatic Laempe Cold Box Core Shooting Centre of 40 litre, 10 litre and 5 litre capacity and a Laempe mixture of capacity 4.2 MT.

Advantage: It provides high productivity with good quality & core hardness consistently, as a result customer can get a defect free, excellent surface and clean profile casting every time.



HIGH PRESSURE MOULDING LINES

DISA FLEX 70 (Mould cake size 900x700x300/300 mm)

DISA FLEX 70 High-Pressure flask moulding line with horizontal parting, with Automatic Core setter and 2 MT unheated Auto Pour from Inductotherm. Capacity of a maximum speed of 90 moulds per hour.



HIGH PRESSURE MOULDING LINES

HFM 70 (Mould Box Size 820x820x280/280 mm)

■ HFM 70 High-Pressure Vacuum Squeeze flask-less moulding line with horizontal parting, along with Automatic Mould and Flask Handling System along with 3 MT heated Automatic Press Pour from ABP. Capacity of a maximum speed of 90 coreless moulds per hour.

Advantage: Automated system helps to produce bulk quantity with uniform quality of castings; better and consistent mould hardness and strength, which produces consistent wall thickness and dimension. As a result, the customer can get their bulk orders on time. Auto pouring systems help increase yield, better pouring and inoculant control so the metallurgical control is better & consistent.



SEMI AUTOMATIC MOULDING LINES

ARPA 900 Simultaneous Jolt Squeeze (Mould Box Size 1000x1000x300/300 mm)

■ 1 set of ARPA 900 Jolt Squeeze Machine for making larger castings.

DEMAN 450 Simultaneous Jolt Squeeze (Mould cake size of 650 x 650 x 250 / 250mm)

■ 1 sets of DEMAN 450 Jolt squeeze machine to cater to the smaller castings.

Advantage: Comparatively small batch can be produced in these semi-automatic lines so that the customer can also place orders of small quantities.



NO BAKE MOULDING SYSTEM

Plant has 2 mixers with a capacity of 5.0 MT/hr with an automatic pneumatic sand reclamation system. With the capacity to make Castings of weights of up to 3000 kgs per day.

Advantage: Bigger sized castings can be produced side by side.



No bake moulding line

MELTING UNIT

KISWOK can produce every grade of Grey Iron & Ductile Iron or S.G. Iron (Spheroidal Graphite Iron) with a minimum batch size of 1 MT.

- Total melting capacity of 11 MT/hr.
- Two 1 Tonne Induction Furnace with Total Melting capacity of 2MT/hr. with 3 crucible.
- Four 2 Tonne Induction Furnaces with Total Melting capacity of 8MT/hr. with 6 crucible.

Advantage: Induction furnace helps to produce different grades of material in a small batch or big batch at the same time in different moulding lines for better metallurgical control. It is also environment friendly & pollution free and most importantly it is cost effective.



Induction furnaces

CASTING COOLING CONVEYOR

360 m long Vinar Conveyor cools the casting in a hung environment and it is completely online.

Advantage: Castings are not on the floor area. Hence no impact during handling negating damage or cracking.



SHOT BLASTING FACILITIES

KISWOK has two Shot Blasting continuous hanger-type machines with speed synchronization to the moulding speed (130 casting per Hr.). We also have an adequate dust collecting system for clean environment.

Advantage: Continuous hanger-type Blasting maintains the FIFO system of continuous production.



DE-GATING SYSTEM

Four Wedge Cutters and two Runner Breakers work continuously on an Apron conveyor.

Advantage: There is minimum impact on the casting during De-Gating and hence, there is no possibility of internal cracks.



MACHINING FACILITIES

- Total of 70 Lathe machines.
- Presently we have nine CNC VTL's for machining Auto Components.
- Three Multi-Head Drilling Units.

Advantage: In-house machining facilities help customers save their money and effort to get the best quality machined castings under single roof.



TESTING FACILITIES

- Three Hydraulic (Hydro) Testing Machines for testing/fittings castings of up to Dia 1000 mm.
- Two Load Testing Machines for static load checking on castings such as Frame / Cover.
- Horizontal Balancing machine for Dynamic Balancing of Brake drums.
- Balancing machine for ensuring balanced machined casting.
- Coordinate Measuring machine (CMM) for accurate measurement.

Advantage: With in-house testing machineries we make sure that there is no compromise on the quality of the castings and that the defect free castings are delivered, thereby ensuring total satisfaction of the customer on the quality front.



PRODUCT RANGES

Automobile Castings

- Brake Drums for heavy commercial and passenger vehicles.
- Axle Parts for heavy commercial and passenger vehicles.
- Differential Case and Cover for heavy commercial and passenger vehicles.

Pipe Fittings

Cast Iron & Ductile Iron Pipe fittings ranging from sizes 80 mm to 1000 mm conforming IS 9523, ISO 2531 & EN 545, IS 1538, IS 1537 / 7181

Valves

Cast Iron and Ductile Iron Air Valves, Butterfly Valves, Sluice Valves.

Drainage Castings

Cast Iron & Ductile Iron Frame Cover as per EN 124, BS 5834 and IS 1726.

- Gully grating
- Channel grating
- Lift assisted access covers
- Recess covers
- Surface boxes
- Step Iron

Street and Garden Furniture

Lamp Posts, Tree Grate, Bollards, etc.

Agri Castings

Press Roll and Cambridge Roller.

Weights

- Tractor Weights
- Counter Weights for Forklifts, Excavator, Lifts and Elevators.

Machine Parts

We also have the infrastructure to produce:

- Electric Motor Body
- Body and Fly Wheels for Pumps
- Press Tool Body and Dies (Heavy Weight)
- Gear Box and Housing for Gear Reducer.

Railway and Industrial Castings

The process of supplying various CI & DI Components for *The Indian Railways* and other *Heavy and Light Engineering Industries* has been set in motion.



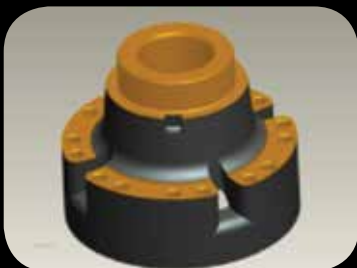
BRAKE DRUM



CASTELLATED BRAKE DRUM



DIFFERENTIAL CASE



DIFFERENTIAL COVER



RA 109 CARRIER HOUSING



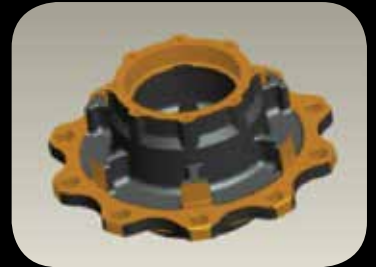
DROP GEAR HOUSING



FRONT HUB



REAR HUB (RA 109 RR)



DUMMY HUB



PINION HOUSING



BRACKET (LH)



BRACKET (RH)



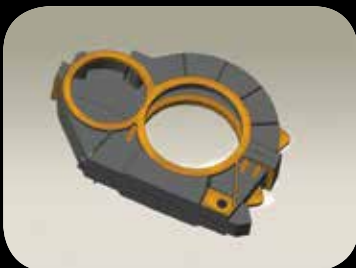
BRACKET SENSOR MTG. Y1



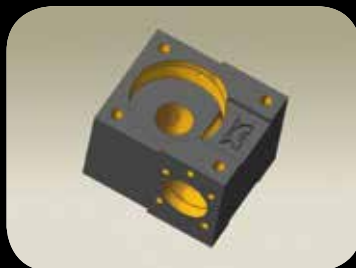
SHOCK ABSORBER
BRACKET



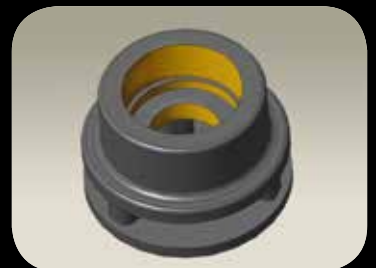
BRACKET Y1 (Bus)



GEAR CASE



HSG 2M



PLANETARY PINION
CASTING



WOOD HOUSING



SUPPORT BASE



3500 851 LUBRICATOR
BODY



CIRCULAR
MANHOLE COVER



DOUBLE TRIANGULAR
MANHOLE COVER



HINGE TYPE
GULLY GRATING



RECESSED TYPE
MANHOLE COVER



MULTIPLE
MANHOLE COVER



DOUBLE TRIANGULAR
SURFACE BOX



MULTI TOP FLAT TYPE
DOUBLE TRIANGULAR



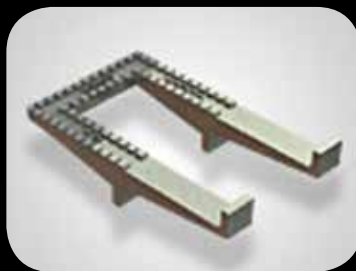
MULTI PART RECESSED
TYPE



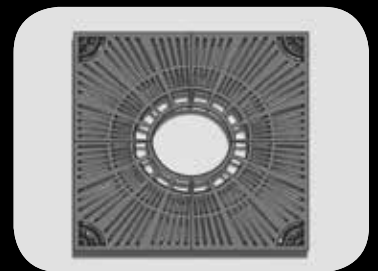
HINGE TYPE KERB
GULLY GRATE



FLAT TOP SURFACE BOX



STEP IRON



TREE GRATING



ALL SOCKET TEE



90 DEGREE SOCKETED BEND



DUCKFOOT BEND



11.25 DEGREE SOCKETED BEND



ALL SOCKET CROSS



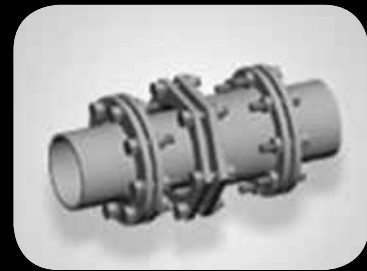
LEVEL INVERT TEE
(HYDRANT TEE)



FLANGED CONCENTRIC
REDUCER



ALL FLANGED TEE



DISMANTLING JOINT



45 DEGREE Y TEE



PUDDLE FLANGE



DOUBLE FLANGE SEMI
CIRCULAR BEND



BREAKING RING



CAMBRIDGE ROLL



PRESS RING



PROFILED CAST WHEEL



RINGER WHEEL



CROSS KILL RING

THE KISWOK PROMISE

TIME SERVICE COST STANDARD



PROMINENT CUSTOMERS



DAIMLER



NAVISTAR





P-3 P-3

MC
P-1

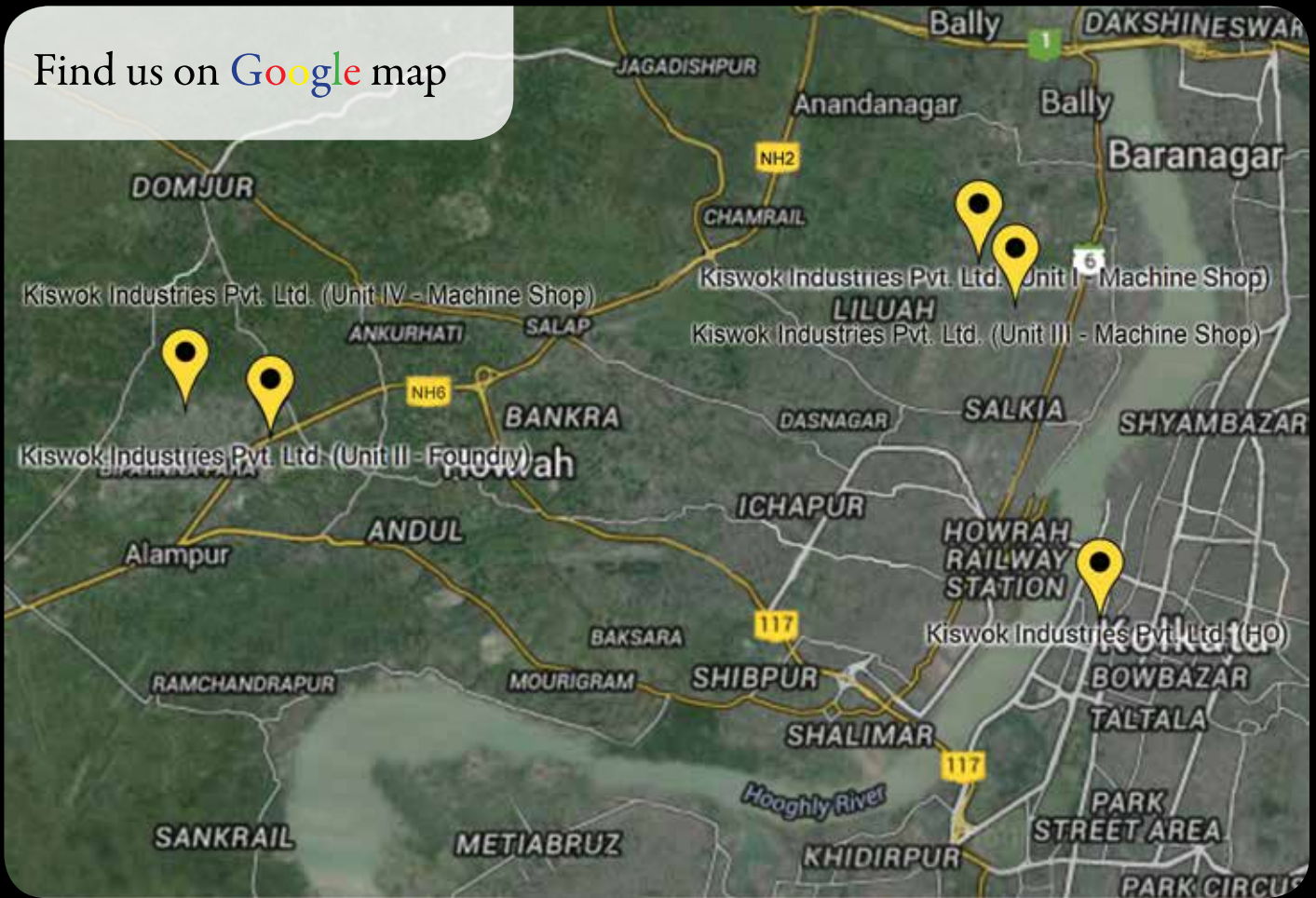
COPE
FE T



FURTHER EVOLUTION

KISWOK believes in constant evolution. That ensures the alpha position. KISWOK is not satisfied with any less. Their forethoughts to put a completely new world class foundry with latest technology machineries to increase the production capacity up to 15,000 MT finished casting (CI, DI, Steel & Aluminium) per month. KISWOK's plans to set up another CNC machining unit to provide machined Automotive Castings, Pipe Fittings and Drainage castings to the end customers.

Find us on Google map



KISWOK Industries Pvt. Ltd
11, Brabourne Road,
Kolkata 700 001, West Bengal, India

T: +91 33 2669 6658
F: +91 33 2669 6661

enquiry@kiswok.com
www.kiswok.com

Unit - I (Machine Shop)
62/1 Bhattanagar, Liluah,
Howrah 711 203, West Bengal, India.

Unit - II (Foundry)
Jalan Industrial Complex, Gate No.1,
Bipranna Para, Via Begri, Domjur,
Howrah 711 411, West Bengal, India.

Unit - III (Machine Shop)
1 Kundan Lane, Liluah,
Howrah 711 203, West Bengal, India.

Unit - IV (Machine Shop)
Bipranna Para Via Begri (Inside Jalan Complex),
Domjur, Howrah 711 411, West Bengal, India.



KISWOK

Engineering Better Tomorrows